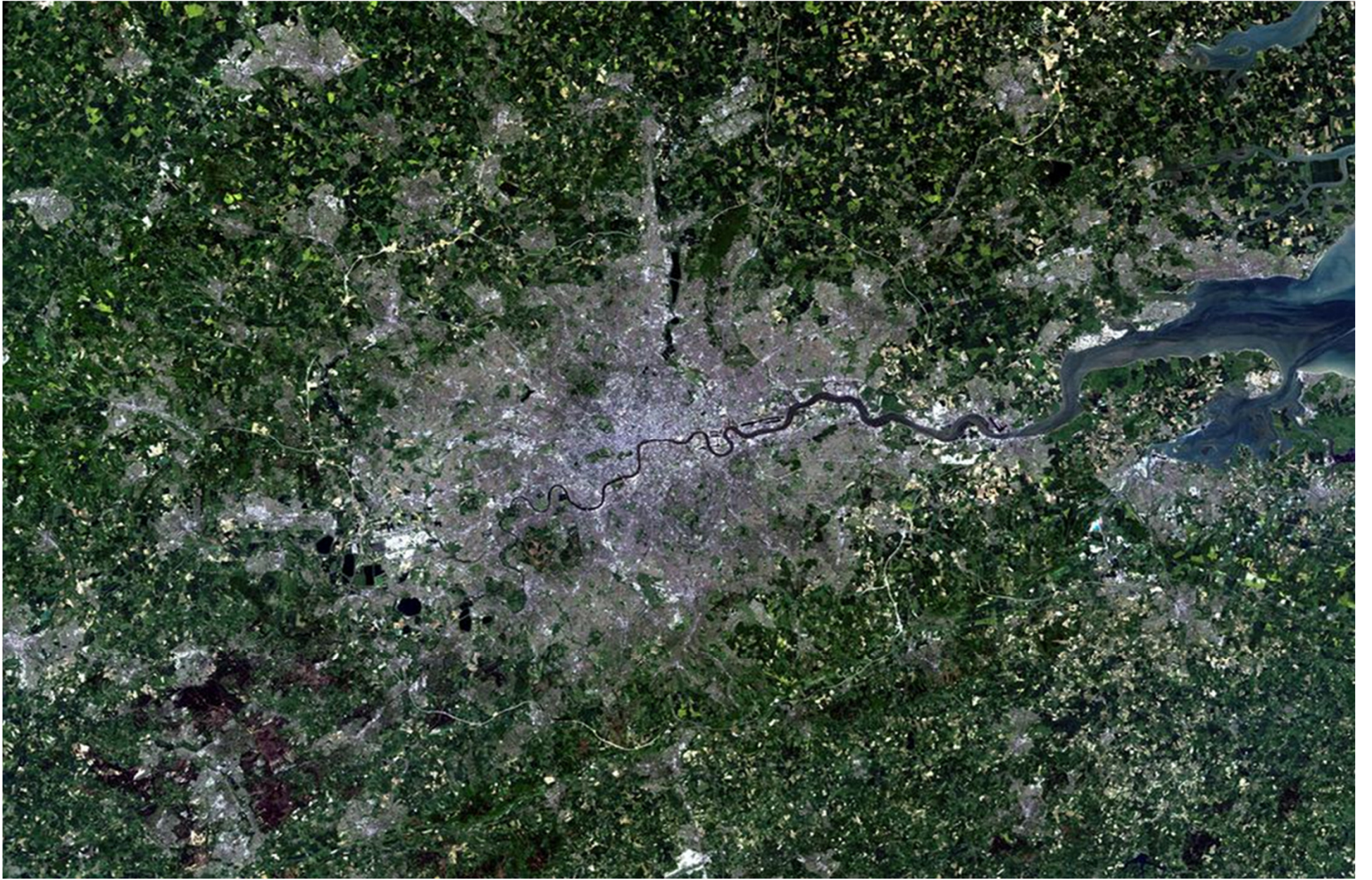


Natural Capital - a London context

Peter Massini
Principal Policy Officer
Greater London Authority

MAYOR OF LONDON





MAYOR OF LONDON



MAYOR OF LONDON



MAYOR OF LONDON

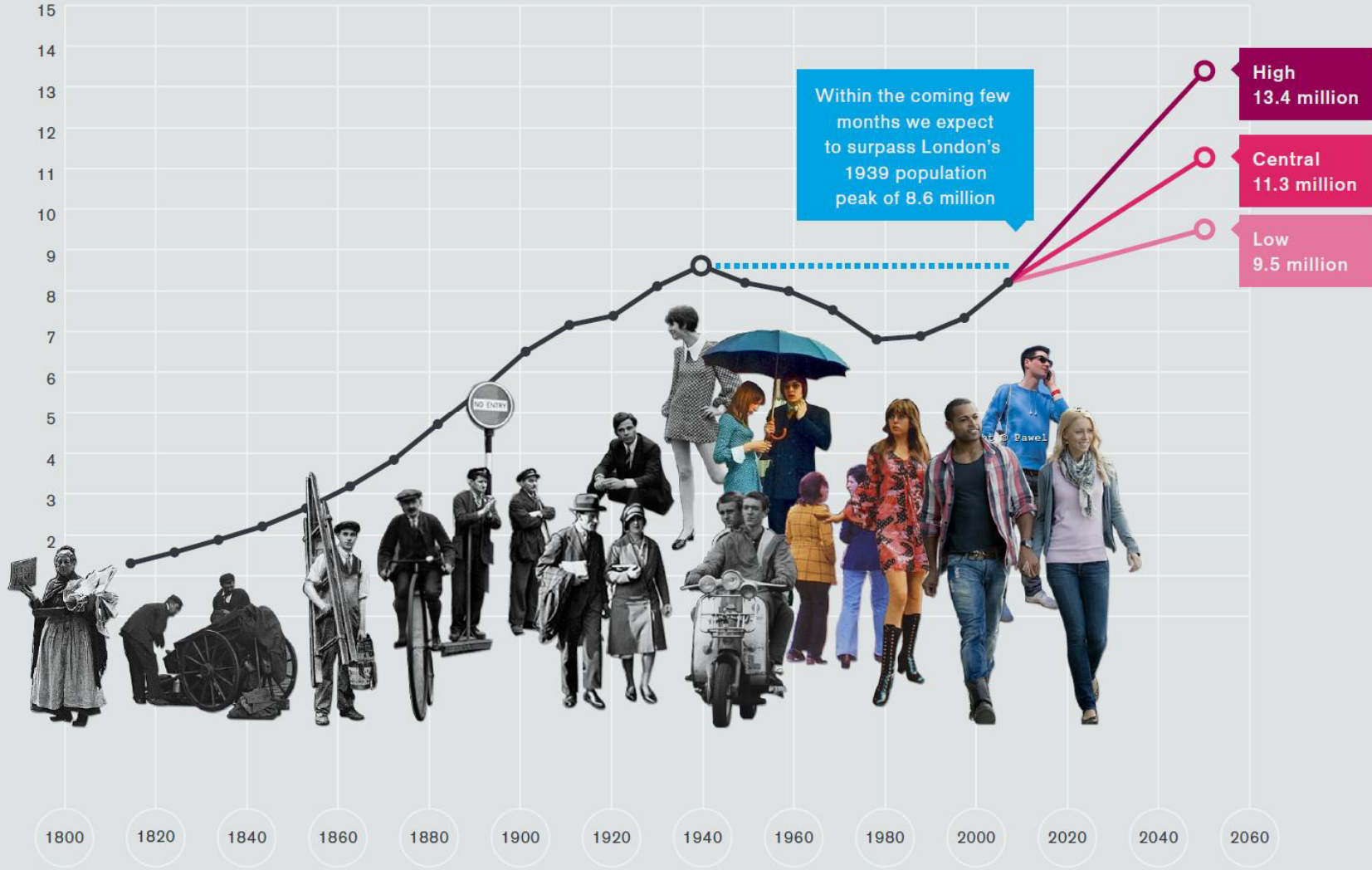


MAYOR OF LONDON



MAYOR OF LONDON

POPULATION
(MILLIONS)



MAYOR OF LONDON



MAYOR OF LONDON

Raising the capital

The report of the London Finance Commission

MAY 2013

LONDON INFRASTRUCTURE PLAN 2050 A CONSULTATION

MAYOR OF LONDON



MAYOR OF LONDON

Natural Capital
Investing in a Green Infrastructure
for a Future London



Green Infrastructure Task Force Report
Prepared by the Greater London Authority on
behalf of the Green Infrastructure Task Force

MAYOR OF LONDON

WHAT DO WE NEED TO DO?

- Focus more on the function of green infrastructure rather than its form.
- Properly account for the value of green infrastructure.
- Relate the services provided by green infrastructure to outcomes and beneficiaries, and develop funding models accordingly.
- Encourage innovation in planning and design to enhance multifunctionality and deliver new green infrastructure in the context of denser development.

MAYOR OF LONDON

RETHINKING PURPOSE

Our aim is to reframe why it is important to protect, conserve and improve London's green spaces and natural environment and to green the city.

Many Londoners have always valued the essential recreational, cultural and ecological qualities of the city's parks, green spaces, trees and wetlands.

But today environmental protection is also guided by the recognition that there are broader benefits to society. These provide a compelling economic rationale for investing in a greener city because of the improvements to health and quality of life of all Londoners and the long-term productivity of the city.

MAYOR OF LONDON

GREEN INFRASTRUCTURE

The network of green spaces (as well as features such as street trees and green roofs) that is planned, designed and managed to:

- promoting healthier living;
- lessening the impacts of climate change;
- improving air quality and water quality;
- encouraging walking and cycling;
- sequestering carbon; and
- enhancing biodiversity and ecological resilience.

MAYOR OF LONDON



MAYOR OF LONDON



MAYOR OF LONDON



MAYOR OF LONDON

NATURAL CAPITAL

The economic benefits to people provided by the services the environment provides for free.

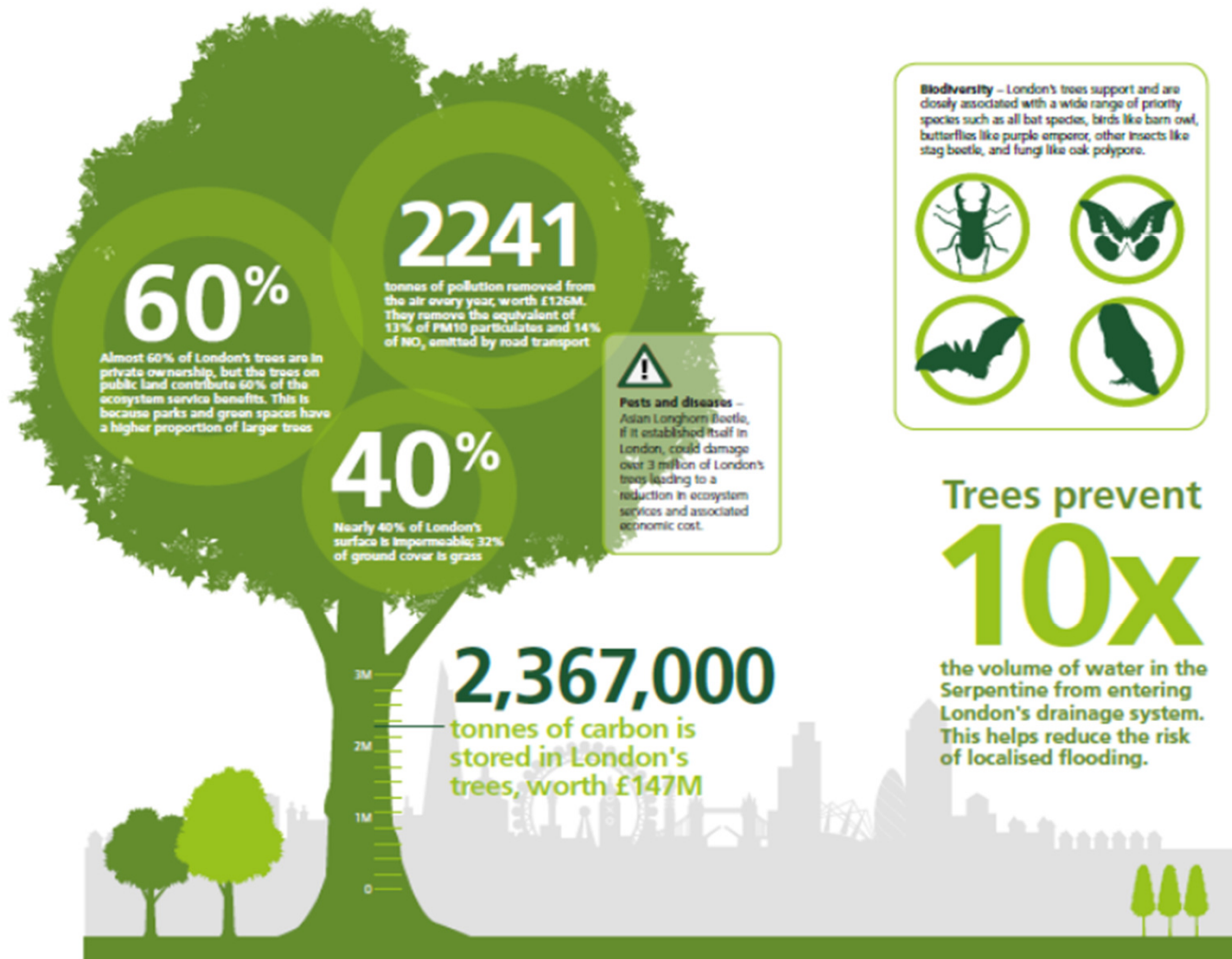
Services such as:

- cleaner air,
- cleaner water,
- better health,
- contact with nature,
- attractive landscapes.

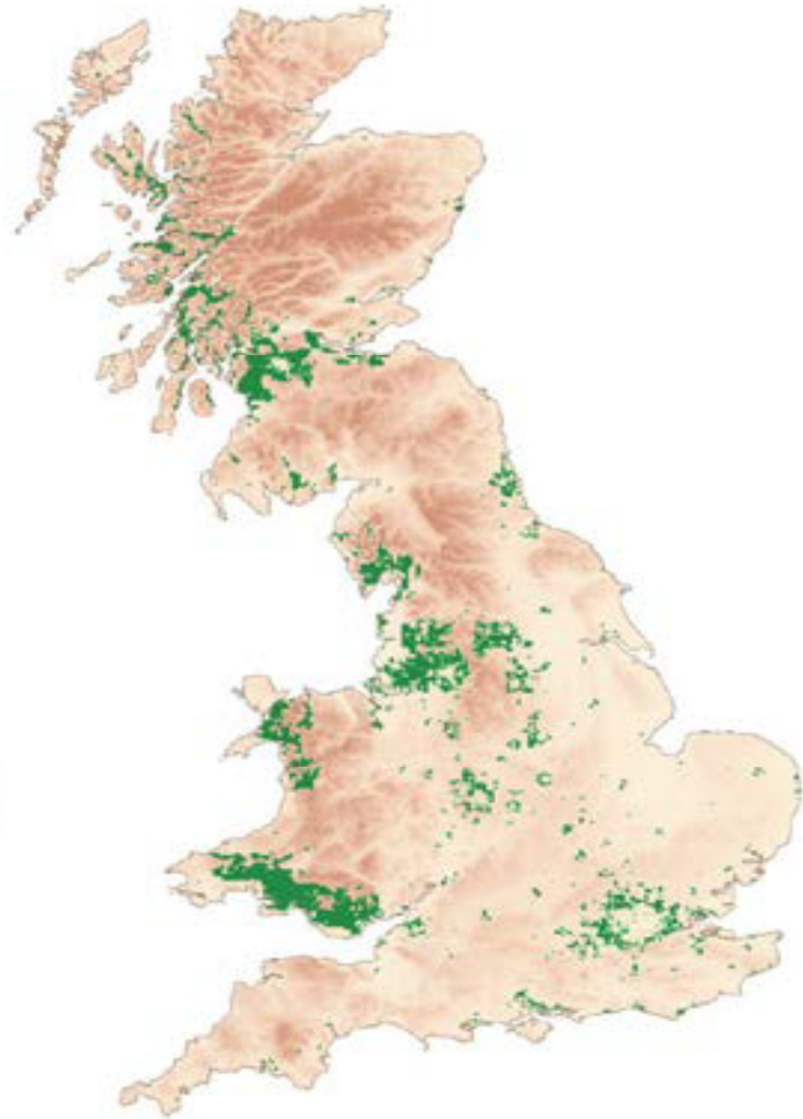
Natural capital accounting - a framework that collates and presents economic information about green infrastructure in a similar way to other capital assets such as the infrastructure of roads, pipes, cables, etc.

MAYOR OF LONDON

London's trees provide at least £133M of benefits every year in terms of air pollution removal, carbon sequestration and reducing the amount of water going into drains.



MAYOR OF LONDON



MAYOR OF LONDON

NATURAL CAPITAL OF PUBLIC PARKS

Service	Asset value for service, £ million	Share of value
Physical health	550	43%
House price uplift	230	18%
Mental health	150	12%
Carbon dioxide	120	9%
Air quality	90	7%
Temperature	80	6%
Crime	70	5%

MAYOR OF LONDON



MAYOR OF LONDON



THANK YOU

peter.massini@london.gov.uk

[@LDN_Environment](#)

[@PeterMassini](#)